



QT Pulse

School Wellbeing Longitudinal Survey

Continuing Report

Example Public School

17 June

Term 2 2024

QTAcademy



Example Public School

The QT Pulse: School Health Longitudinal Survey is a tool for schools to reflect on school climate for the purposes of creating positive change.

Your Continuing Report is designed to:

- Describe **trends across time** in your **school climate**

Information within this report should be treated as sensitive. This information should never be used for performance management. Only data from completed survey responses are included in this report.

This free QT Pulse report contains graphs for six measures, which are made up of one or more survey questions. A sample question is provided to give an indication of the measure.

Measure	Example question
Effective Practice	I am a successful teacher
Burnout	I feel emotionally drained from my work
Connectedness	I feel like I belong at this school
Leadership Trust	I trust senior executive members in my school to keep their word
Shared Vision	Teachers share the same ambitions and vision for the school.
Student Behaviour	The level of student behaviour in this school interferes with my teaching.

Our premium QT Pulse report contains graphs for 16 measures. You can see an example premium report [here](#).

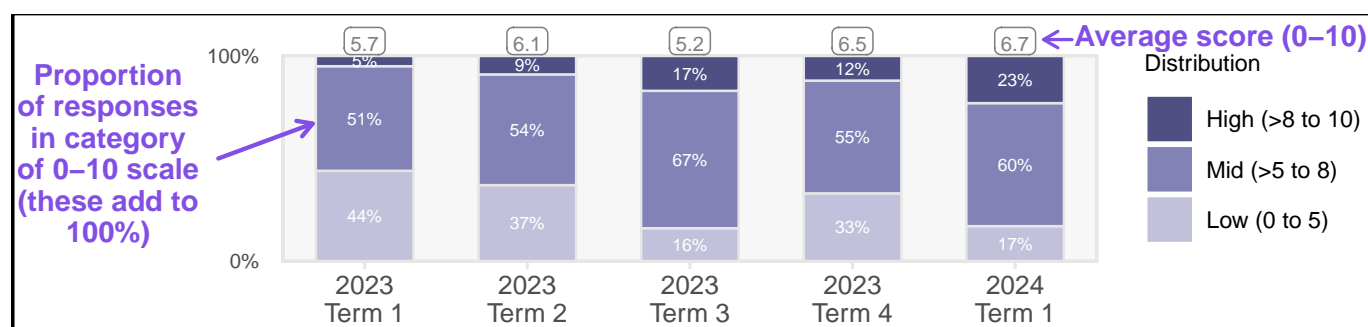
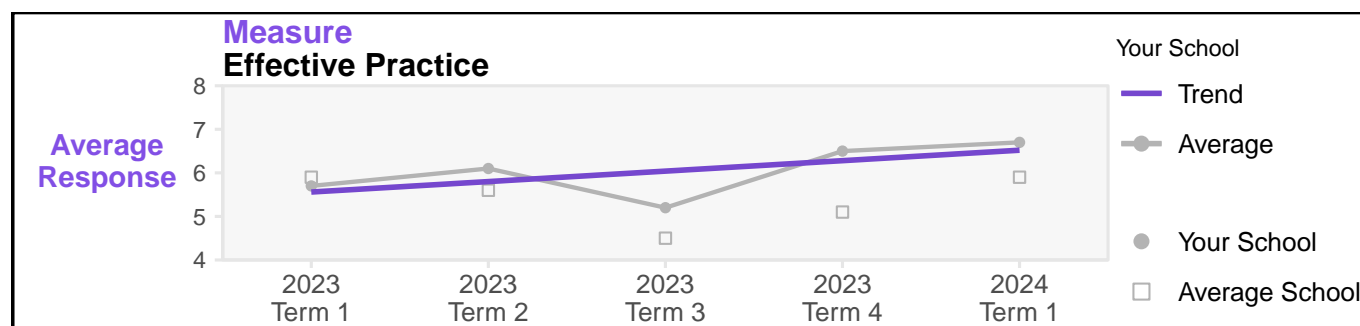
Interpreting the data

In this report you will see two types of graphs in each section.

The first graph compares your school to an “average school” that is representative of a larger data set.

The second graph shows how your school's responses are distributed across Low, Mid, and High categories.

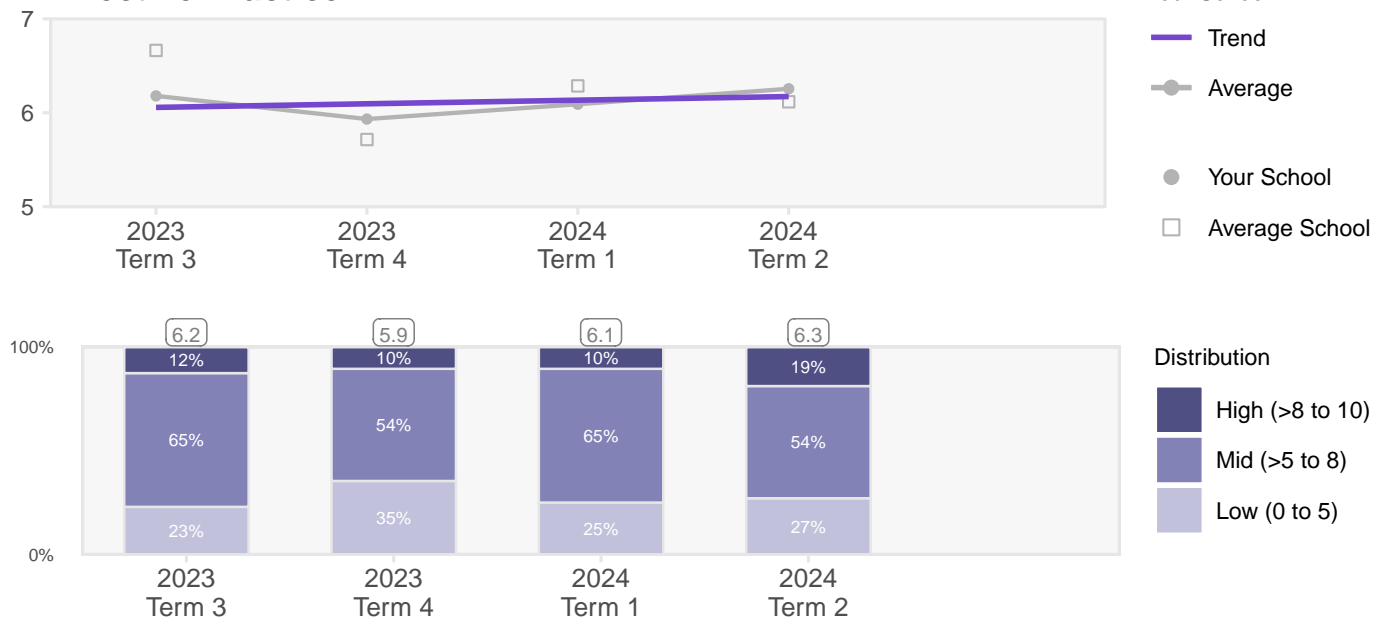
Example graphs



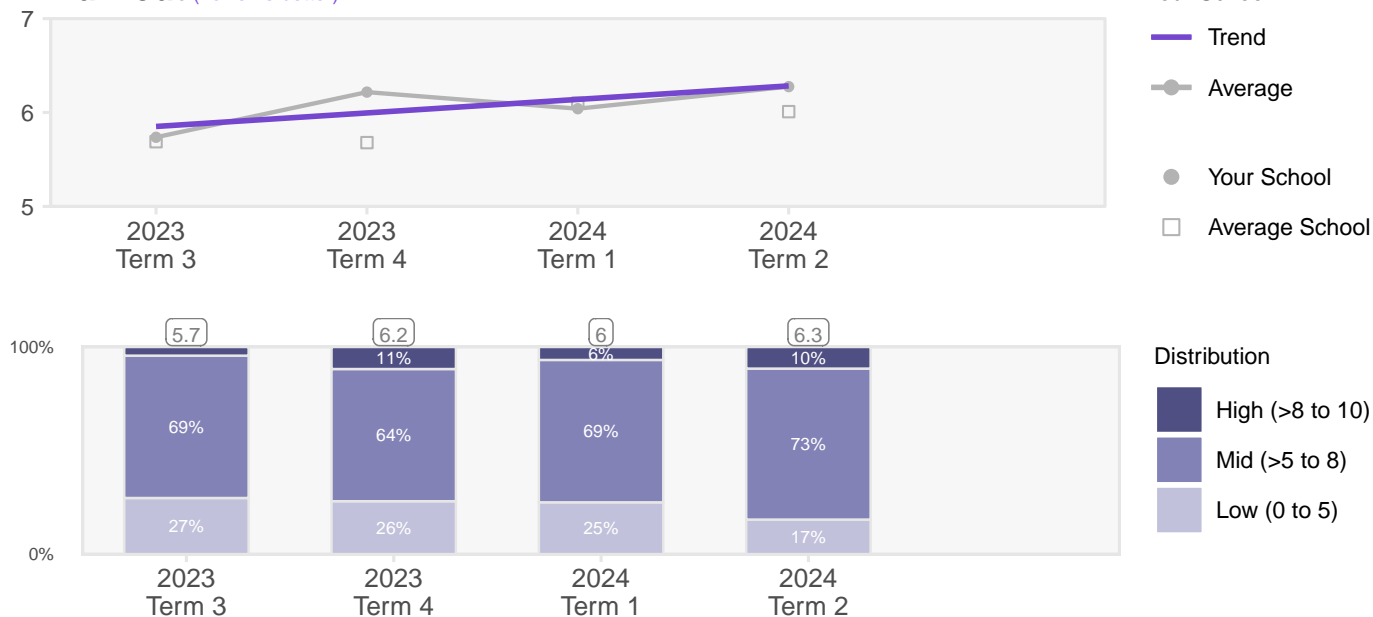
Data collected for this report

2023 Term 3	2023 Term 4	2024 Term 1	2024 Term 2
42	45	44	47

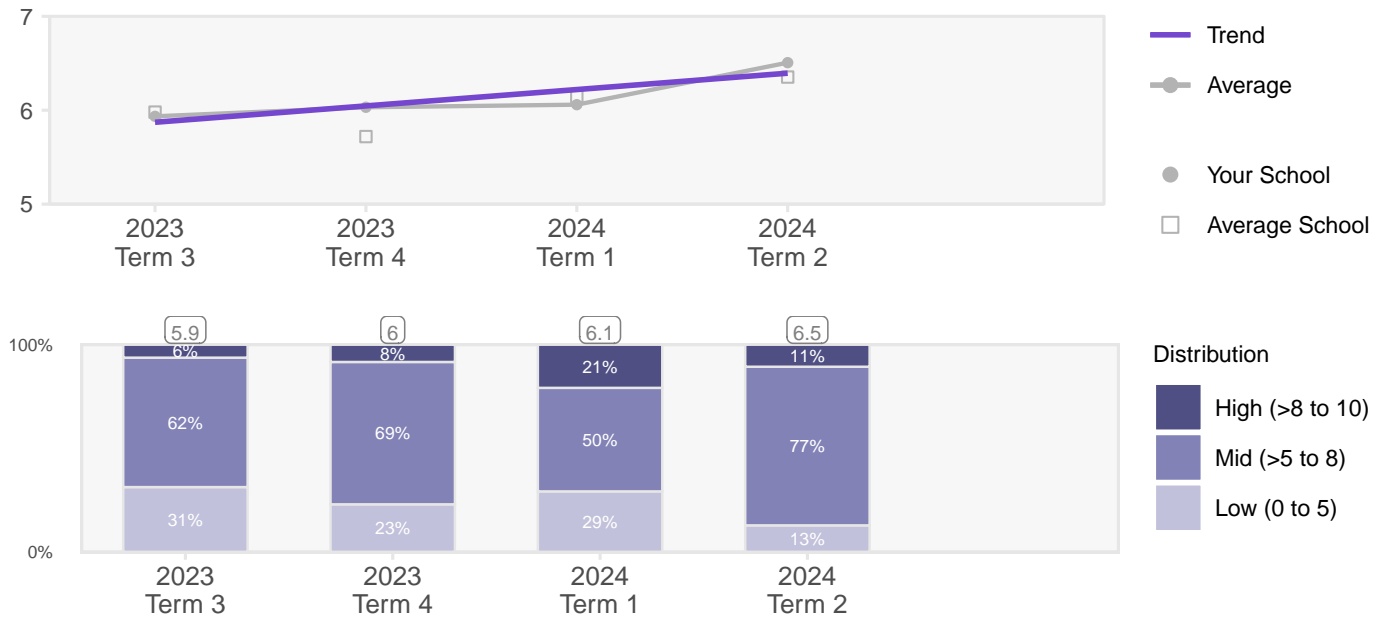
Effective Practice



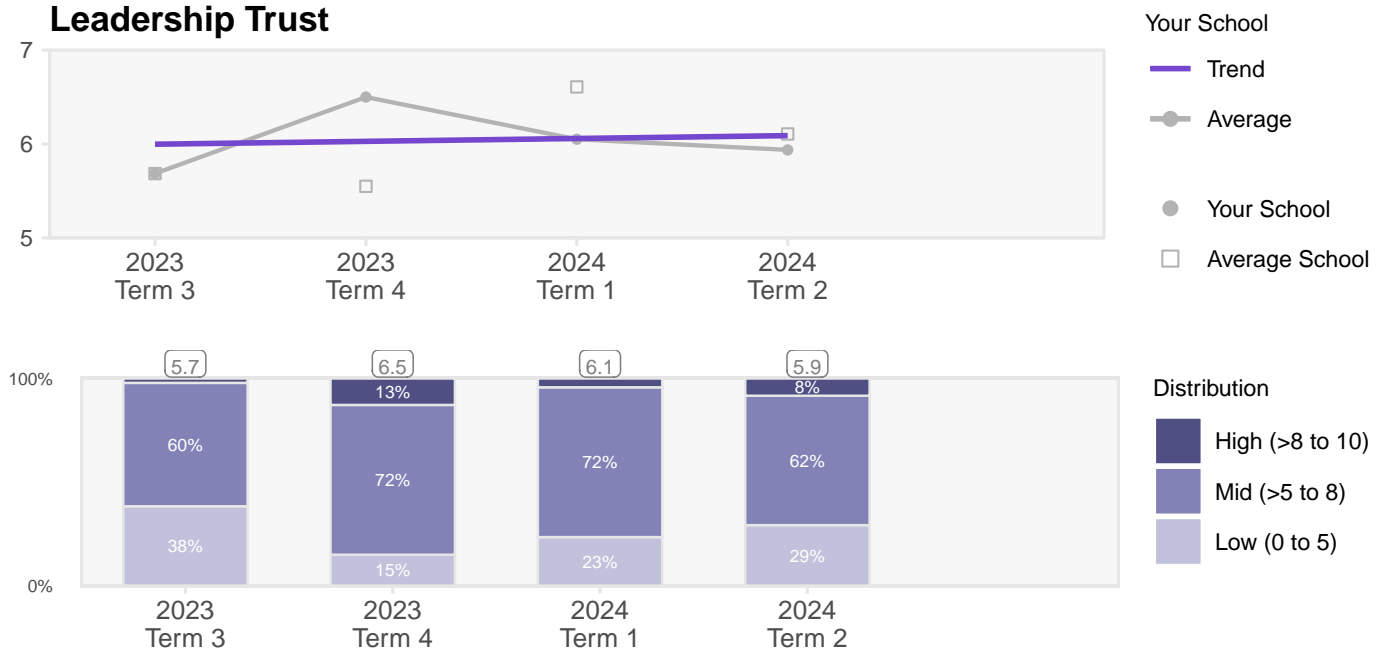
Burnout (Lower is better)



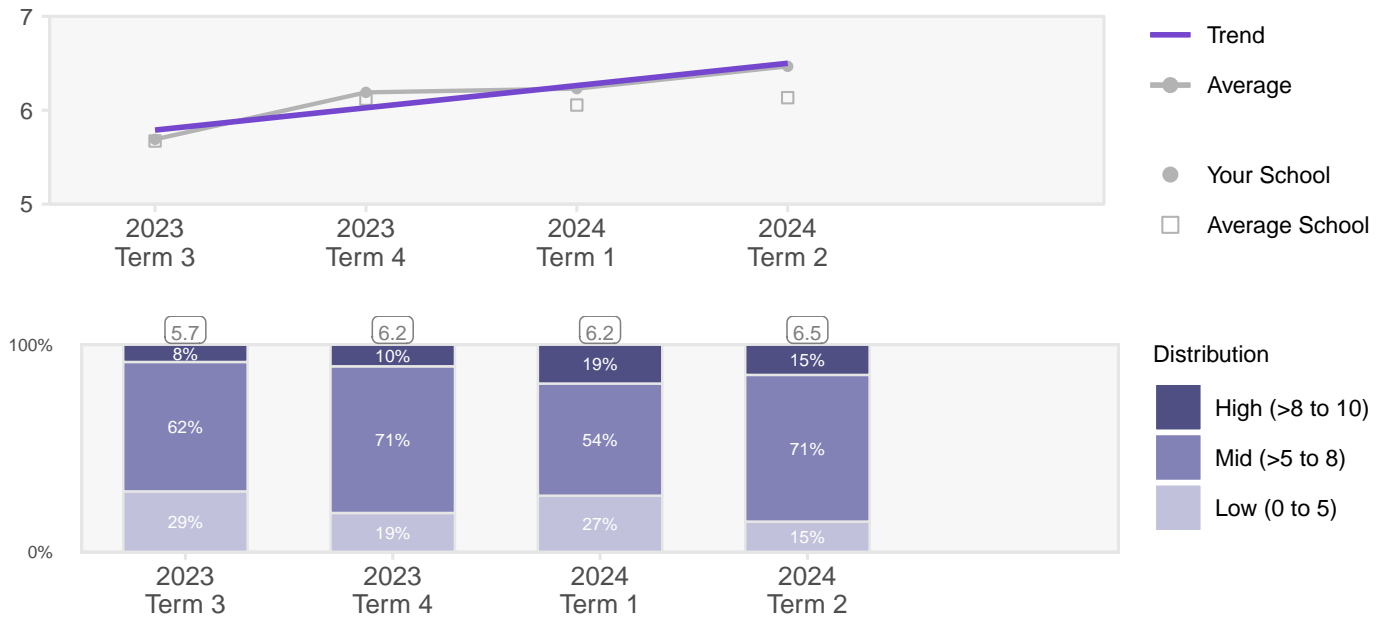
Connectedness



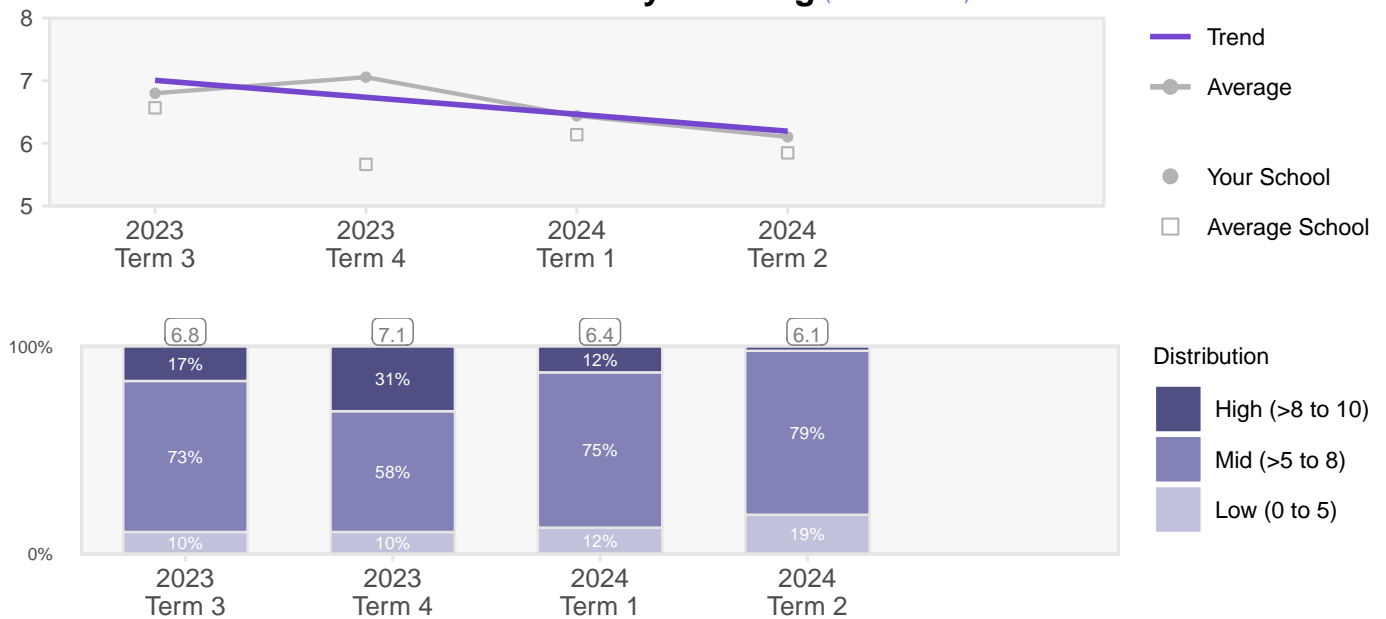
Leadership Trust



Shared Vision



Student behaviour interferes with my teaching (Lower is better)



In this free report, data is collected but not reported on for the 10 additional measures below. You can access the full report by signing up to our premium subscription.

Measure	Example question
Teacher Responsibility	Many of the students I teach are not capable of learning the material I am supposed to teach them.
Sleep Quality	During the past 7 days, how would you rate your sleep quality overall?
Collaboration	There is collaborative practice at this school
Shared Responsibility	How many teachers in this school meet with other teachers to collaboratively plan?
Teacher Trust	I trust the teachers in this school
School Mission	Please choose the most appropriate option that reflects the mission of your school regarding student welfare and academic achievement
Excellence and Equity	We promote personalised learning to fulfil the individual capabilities and needs of learners
Student Trust	I have a good relationship with my students
Parent Trust	How many of your students' parents do their best to help their children learn?
Confidence and Creativity	Students develop personal values and attributes such as honesty, empathy, loyalty, responsibility, and respect for others

[Sign up for the Premium report](#)